



Experimental Area Hydrologic Discussion (AHD)

- WHAT:** Combined text and graphical product, which highlights locations across the contiguous United States that may be impacted by rapid-onset flooding, using guidance from the National Water Model (NWM), the Weather Prediction Center (WPC), and other sources.
- WHO:** National Weather Service (NWS) field offices. Core partners as part of Impact-based Decision Support Services (IDSS).
- WHY:** Provide a discussion focusing on areas of potential rapid-onset flooding with aerial coverage dependent on hydrologic conditions generally over the next 2-6 hours to support the NWS Flash Flood watch and warning process and IDSS.
- WHEN:** Event driven.
- WHERE:** <https://www.weather.gov/owp/operations/ahd>

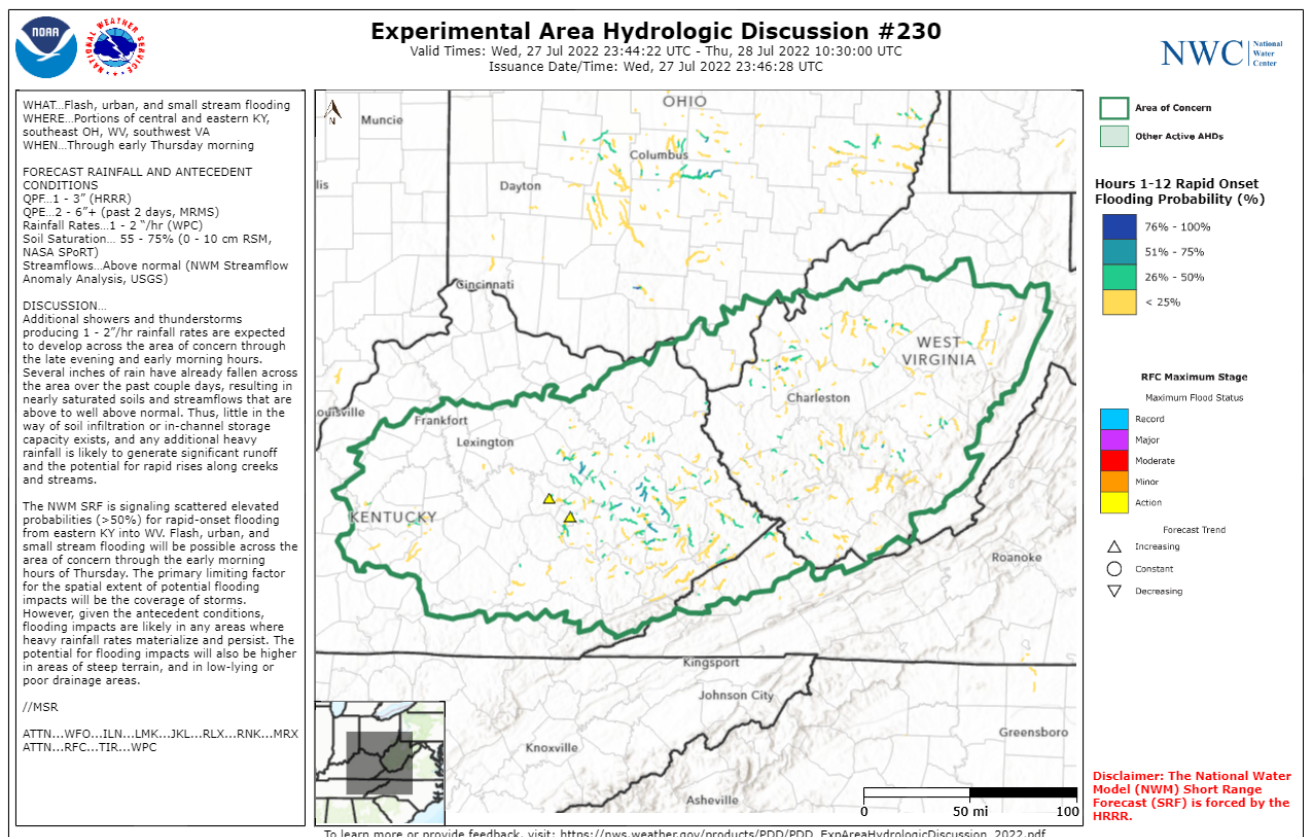


Figure: Experimental AHD issued on July 27, 2022 at 6:48 PM CDT.

The NWS is accepting comments through December 31, 2022 on the Area Hydrologic Discussion (AHD). Please provide feedback on this product at: https://www.surveymonkey.com/r/ExpAreaHydroDisc_2022